

# Pertinent differential diagnostic Considerations include all except:

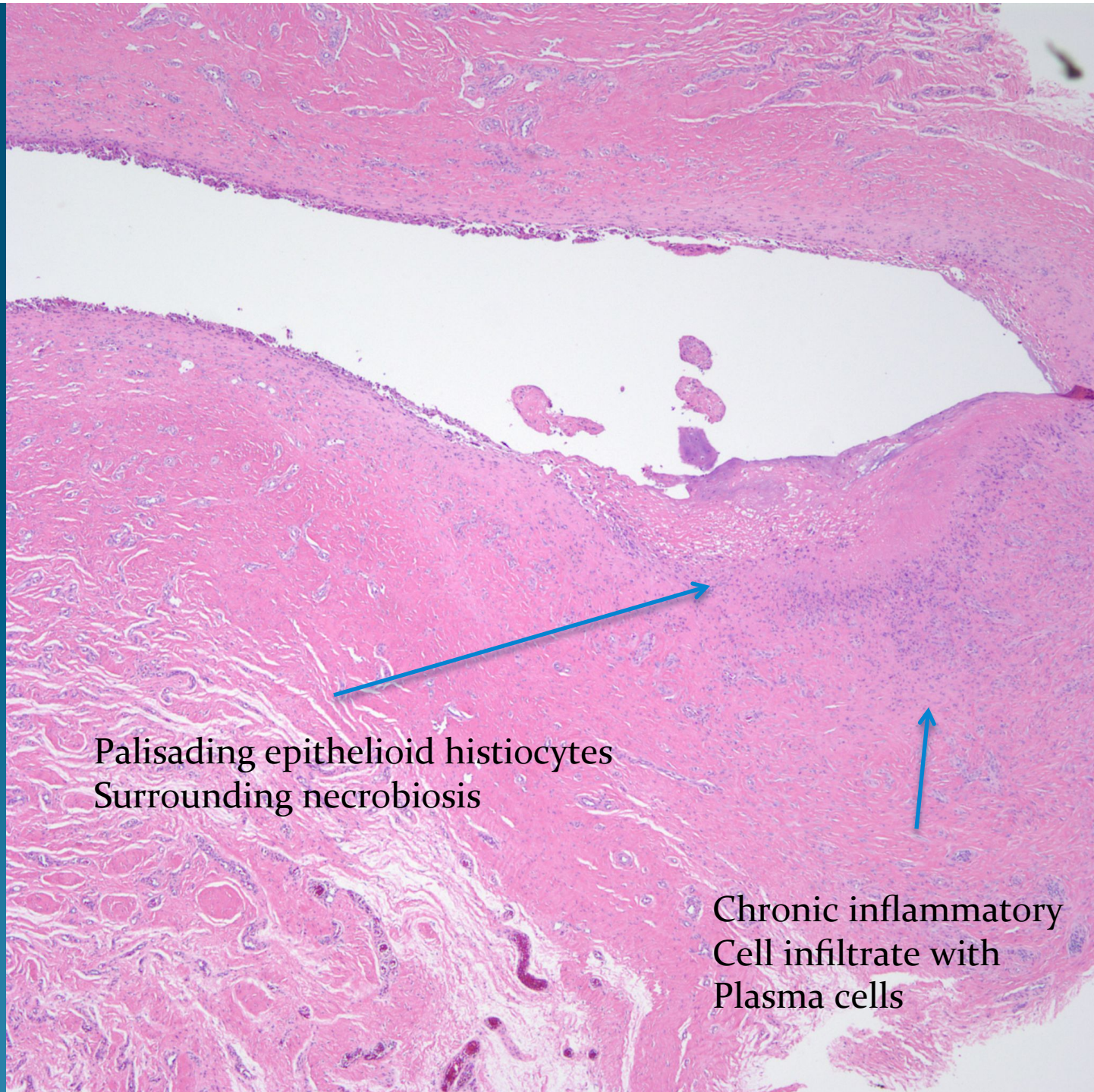
- A. Foreign body reaction
- B. Sarcoidosis
- C. Cat scratch disease
- D. Rheumatoid nodule
- E. Tularemia

# Sarcoidosis

# Notes

- This is a palisading necrobiotic granuloma and is consistent with a rheumatoid nodule
- Sarcoidosis classically exhibits non-caseating granulomas with minimal surrounding inflammatory cells
- Histologically identical changes may be seen with a pseudo-rheumatoid nodule which is often times a response to a foreign body
- Zoonotic infections including Yersinia, Tularemia, and Cat-Scratch disease may also present with palisading necrobiotic granulomas
- In all cases, an infectious etiology should be excluded





Palisading epithelioid histiocytes  
Surrounding necrobiosis

Chronic inflammatory  
Cell infiltrate with  
Plasma cells